

DEPLOY JT WAIN IN IMAGEJ

V1.0

Last updated on Jan 2006

ALL RIGHTS RESERVED BY LAB ASPRISE! © 1998, 2006.

Table Of Contents

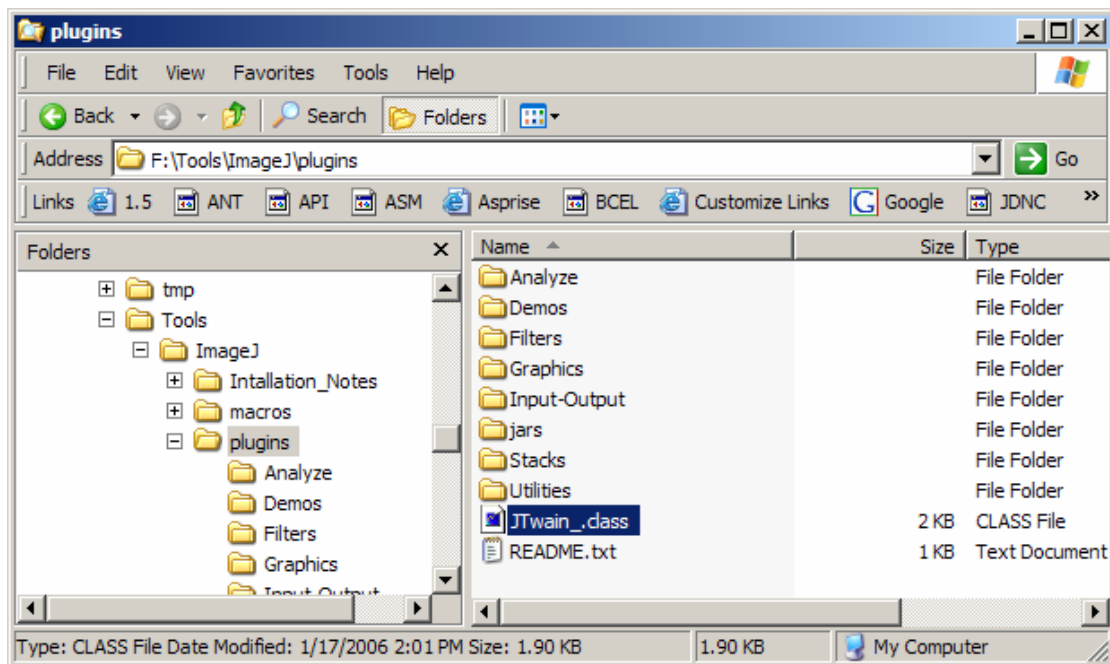
1	EVALUATION VERSION	3
1.1	INSTALL JTWAIN_.CLASS	3
1.2	INSTALL JTWAIN.JAR.....	3
1.3	INSTALL ASPRISEJTWAIN.DLL	4
1.4	TESTING JTWAIN	4
1.5	APPENDIX: FILE OVERVIEW	6
2	LICENSED VERSION	7

1 Evaluation Version

To make JTwain evaluation version working with ImageJ, simply follow the steps below:

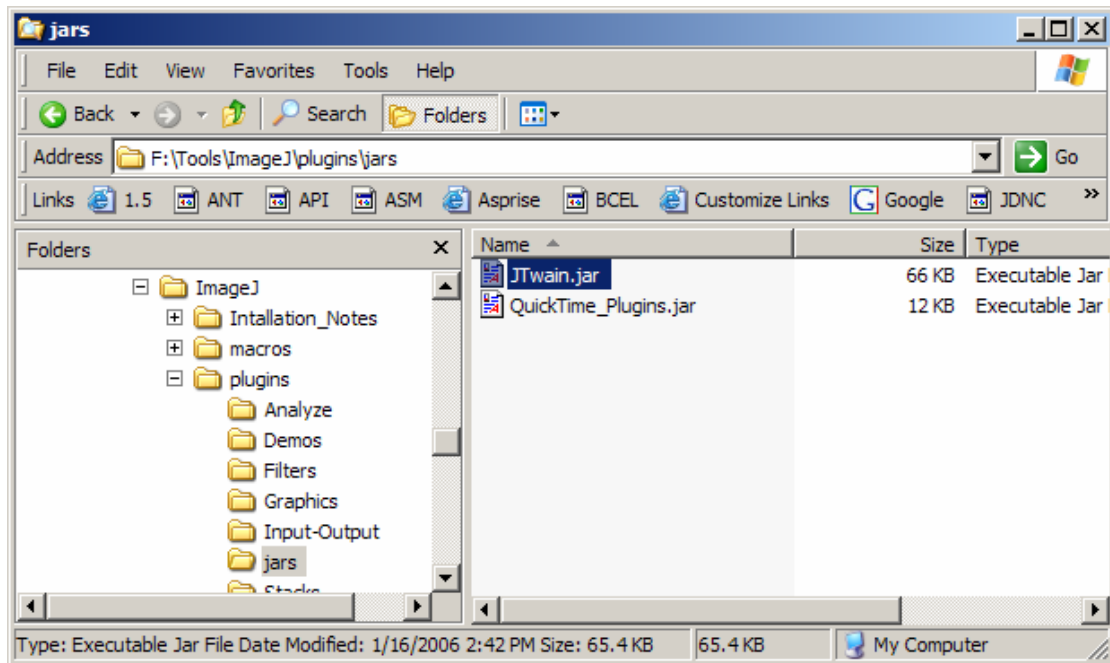
1.1 Install JTwain_.class

Download JTwain_.class from <http://rsb.info.nih.gov/ij/plugins/jtwain.html> and put it into the plugin folder of ImageJ:



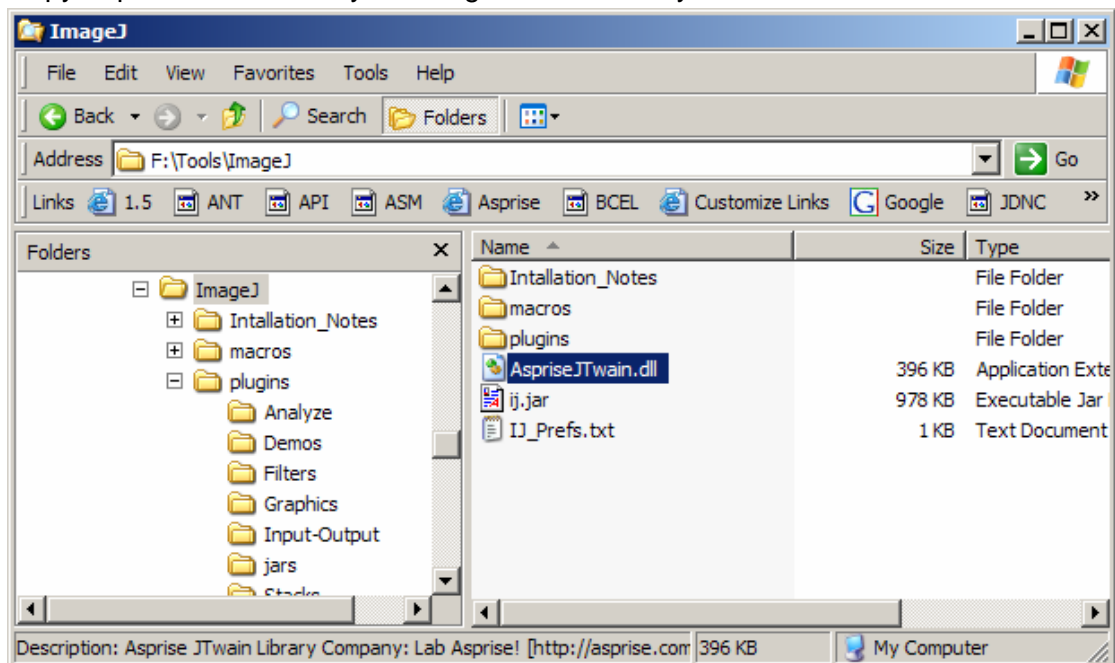
1.2 Install JTwain.jar

Copy JTwain.jar from JTwain evaluation kit to the **ImageJ/plugins/jars** folder:



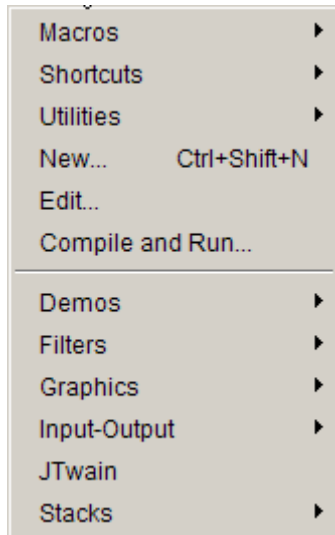
1.3 Install AspriseJTwain.dll

Copy AspriseJTwain.dll to your ImageJ root directory:

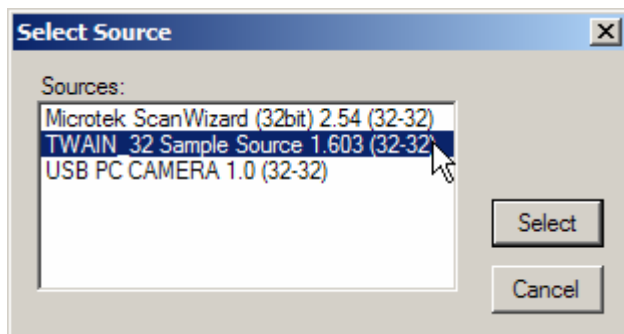


1.4 Testing JTwain

Open ImageJ, click on the “Plugins” menu, you should see JTwain is in the plugin list:



Click on it, you should see the select source dialog popping up:



Select it and an image will be acquired:



1.5 Appendix: File Overview

Directory of F:\Tools\ImageJ [Root directory of JTwain]

```

01/17/2006  02:27 PM    <DIR>          .
01/17/2006  02:27 PM    <DIR>          ..
03/10/2004  11:05 AM                405,504 AspriseJTwain.dll
07/11/2005  04:07 PM          1,000,606 ij.jar
01/17/2006  02:26 PM              484 IJ_Prefs.txt
01/17/2006  01:59 PM    <DIR>          Intallation_Notes
01/17/2006  01:59 PM    <DIR>          macros
01/17/2006  02:27 PM              0 out.txt
01/17/2006  02:01 PM    <DIR>          plugins
                4 File(s)          1,406,594 bytes

```

Directory of F:\Tools\ImageJ\plugins

```

01/17/2006  02:01 PM    <DIR>          .
01/17/2006  02:01 PM    <DIR>          ..
07/14/2005  03:36 PM    <DIR>          Analyze
01/17/2006  01:59 PM    <DIR>          Demos
01/17/2006  01:59 PM    <DIR>          Filters
01/17/2006  01:59 PM    <DIR>          Graphics
01/17/2006  01:59 PM    <DIR>          Input-Output
01/17/2006  02:24 PM    <DIR>          jars
01/17/2006  02:01 PM                1,950 JTwain.class
07/08/2005  03:12 PM              585 README.txt
01/17/2006  01:59 PM    <DIR>          Stacks
01/17/2006  01:59 PM    <DIR>          Utilities
                2 File(s)          2,535 bytes

```

Directory of F:\Tools\ImageJ\plugins\jars

```

01/17/2006  02:24 PM    <DIR>          .
01/17/2006  02:24 PM    <DIR>          ..
01/16/2006  02:42 PM                67,067 JTwain.jar
07/08/2005  03:18 PM          11,818 QuickTime_Plugins.jar
                3 File(s)          79,672 bytes

```

2 Licensed Version

Please visit <http://asprise.com/product/jtwain/order.php> to order. Instructions will be provided in the licensed package.

If you purchased JTwain but did not receive the instruction, please write to use at support@asprise.com and do mention your registration name. Thank you.